



## REGIONAL SPECIALISED METEOROLOGICAL CENTRE -TROPICAL CYCLONES, NEW DELHI TROPICAL WEATHER OUTLOOK

DEMS-RSMC TROPICAL CYCLONES NEW DELHI DATED 23.08.2025

**TROPICAL WEATHER OUTLOOK FOR THE NORTH INDIAN OCEAN (THE BAY OF BENGAL AND THE ARABIAN SEA) VALID FOR THE NEXT 168 HOURS ISSUED AT 0600 UTC OF 23.08.2025 BASED ON 0300 UTC OF 23.08.2025.**

### BAY OF BENGAL:

Under the influence of upper air cyclonic circulation over Gangetic West Bengal & neighbourhood, a Low pressure area formed at 1200 UTC of 22<sup>nd</sup> August, 2025 and it persisted over the same region at 0300 UTC of today, the 23<sup>rd</sup> August, 2025. The associated upper air cyclonic circulation extended upto 7.6 km above mean sea level tilting southwestwards with height. It is likely to move west northwestwards across Jharkhand during next 24 hours and weaken gradually thereafter.

A fresh low-pressure area is likely to form over northwest Bay of Bengal off Odisha-West Bengal coasts around 25<sup>th</sup> August 2025.

Scattered to broken low and medium clouds with embedded intense to very intense convection lay over north & central Bay of Bengal and Andaman Sea. Scattered low and medium clouds with embedded moderate to intense convection lay over south Bay of Bengal and south Andaman Sea.

### \*PROBABILITY OF CYCLOGENESIS (FORMATION OF DEPRESSION) DURING NEXT 168 HRS:

24 HOURS	24-48 HOURS	48-72 HOURS	72-96 HOURS	96-120 HOURS	120-144 HOURS	144-168 HOURS
NIL	NIL	NIL	NIL	NIL	NIL	NIL

\*NOTE: EVERY 24HR FORECAST IS VALID UPTO 0300 UTC (0830 IST) OF NEXT DAY

### ARABIAN SEA:

Scattered to broken low and medium clouds with embedded moderate to intense convection lay over southeast Arabian Sea off Kerala Coast and Lakshadweep Island area. Scattered low and medium clouds with embedded weak to moderate convection lay over rest parts of the Arabian Sea, Gulf of Kutch, Gulf of Cambay, Maldives & Comorin Area.

### \*PROBABILITY OF CYCLOGENESIS (FORMATION OF DEPRESSION) DURING NEXT 168 HRS:

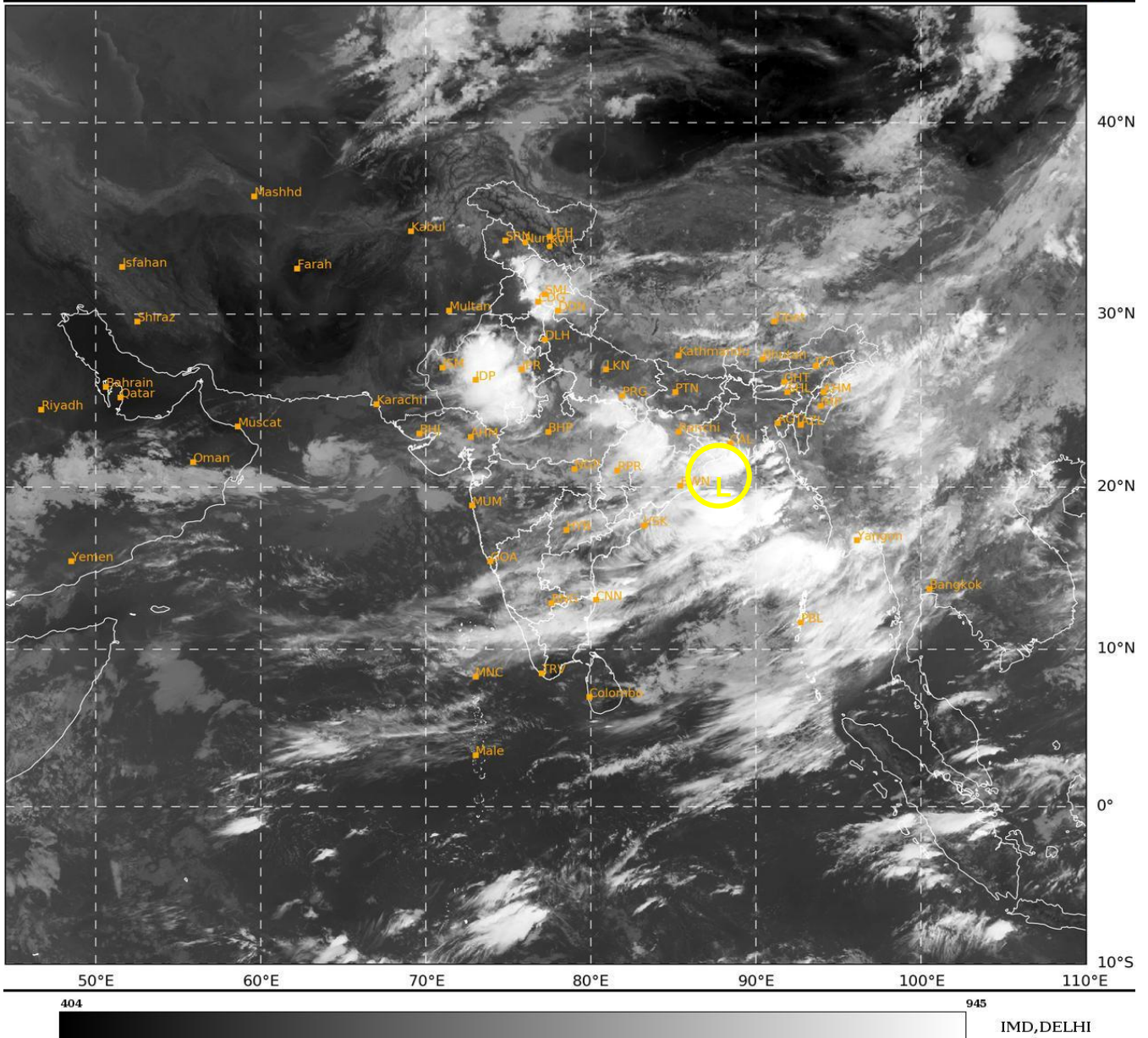
24 HOURS	24-48 HOURS	48-72 HOURS	72-96 HOURS	96-120 HOURS	120-144 HOURS	144-168 HOURS
NIL	NIL	NIL	NIL	NIL	NIL	NIL

\*NOTE: EVERY 24HR FORECAST IS VALID UPTO 0300 UTC (0830 IST) OF NEXT DAY

**REMARKS:** NIL

SAT : INSAT-3DR IMG  
 IMG\_TIR1 10.8 um  
 L1C Mercator

23-08-2025/(0315 to 0342) GMT  
 23-08-2025/(0845 to 0912) IST



**L** : LOW PRESSURE AREA

Cloud distribution: (a) Isolated: <25%, Scattered:25-50%, Broken: 51-75%, Solid:>75%, Convection Intensity: (a) Weak: Cloud Top Temperature(CTT)>-25°C,(b)Moderate:CTT:-25°Cto-40°C,(c)Intense:CTT: -41°Cto -70°Cand(d)Very Intense::Less than -70°C  
 PROBABILITYOFCYCLOGENESIS(FORMATIONOFDEPRESSION):NIL:0%,LOW:1-33%,MODERATE:34-66%ANDHIGH:67-100%  
 ThisisaguidanceBulletinforWMO/ESCAPPanelMembercountries.VisitrespectiveNationalwebsitesforCountryspecificBulletins